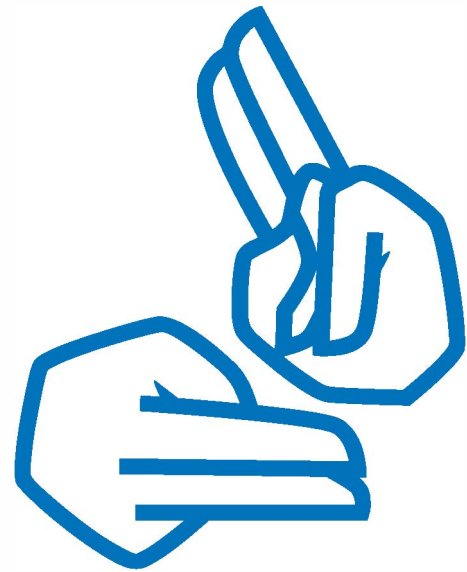
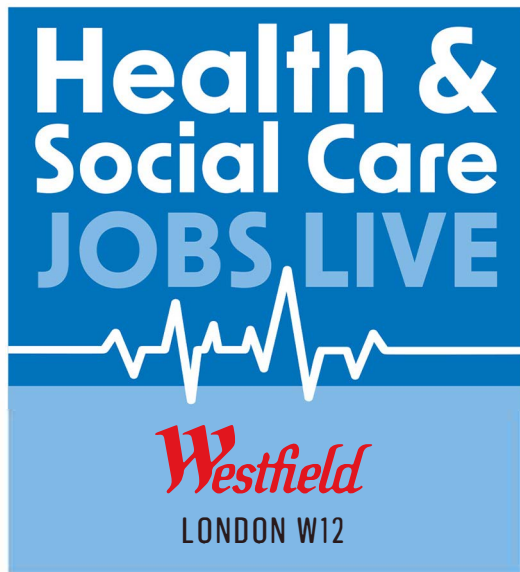


HEALTH & SOCIAL CARE



Welcome to Health & Social Care Jobs Live.

We very much hope you have a very productive time whilst you are with us and that you find your new career.

We understand that every visitor to the show is different, and we want to try and make it an enjoyable and productive experience for everyone who comes to join us.

We also understand that it can be very difficult for those who are deaf or who are hard of hearing which is why we want to do the best we can to help you during your career search.

We have communicated with all of our Exhibitors to do what they can to assist you, they may have "tablets" to be able to write you messages, or they may have Live Transcribe, in any case they are all waiting to "speak" with you.

On Saturday we also have a BSL interpreter available to help you during your journey. They may just be able to give you some information about the show, or they could go around with you and interpret for you with the Exhibitors.

They will also be able to sign some of the Seminars so if there is one that you would particularly like to have interpreted then please do let them know.

Our BSL interpreter will be available from 11.00 – 16.00 on Friday and Saturday.

Please make yourself known to the team at the information desk who will be able to connect you with them.

Good luck with your search.