

# Health & Social Care JOB SHOW

Westfield LONDON W12

Your approach and preparation for the Health and Social Care Job Show could be the vital difference to landing your dream job. Here are some tips for before, during and after the event...



“With an increasingly competitive job market it pays to be proactive and to get yourself out there. Attending the Job Show allows you to add personality to your application by meeting 60+ top employers face to face”

Yvette, Exhibition Manager

## BEFORE THE SHOW



### BRING PLENTY OF CV'S

With so many employers all in one place, you never know where a five minute conversation could lead and what might spark your interest on the day. Your CV is a great tool to show you are prepared and a great reference when completing applications.

On average, 80% of job vacancies are never advertised

### RESEARCH THE COMPANIES

It's much easier to have a conversation when you are familiar with the topic, not only does the conversation become more natural but it shows off your knowledge. A simple internet search beforehand will help you stand out from the crowd and show you have genuine interest working for them.

47% of candidates lose the job due to having little or no knowledge of the company.



### DRESS TO IMPRESS

Did you know 73% of recruiters said personal appearance is a deciding factor when hiring? This doesn't necessarily mean a full suit, however do dress appropriately to meet your potential employer.

5 applicants out of hundreds actually earn a face-to-face interview

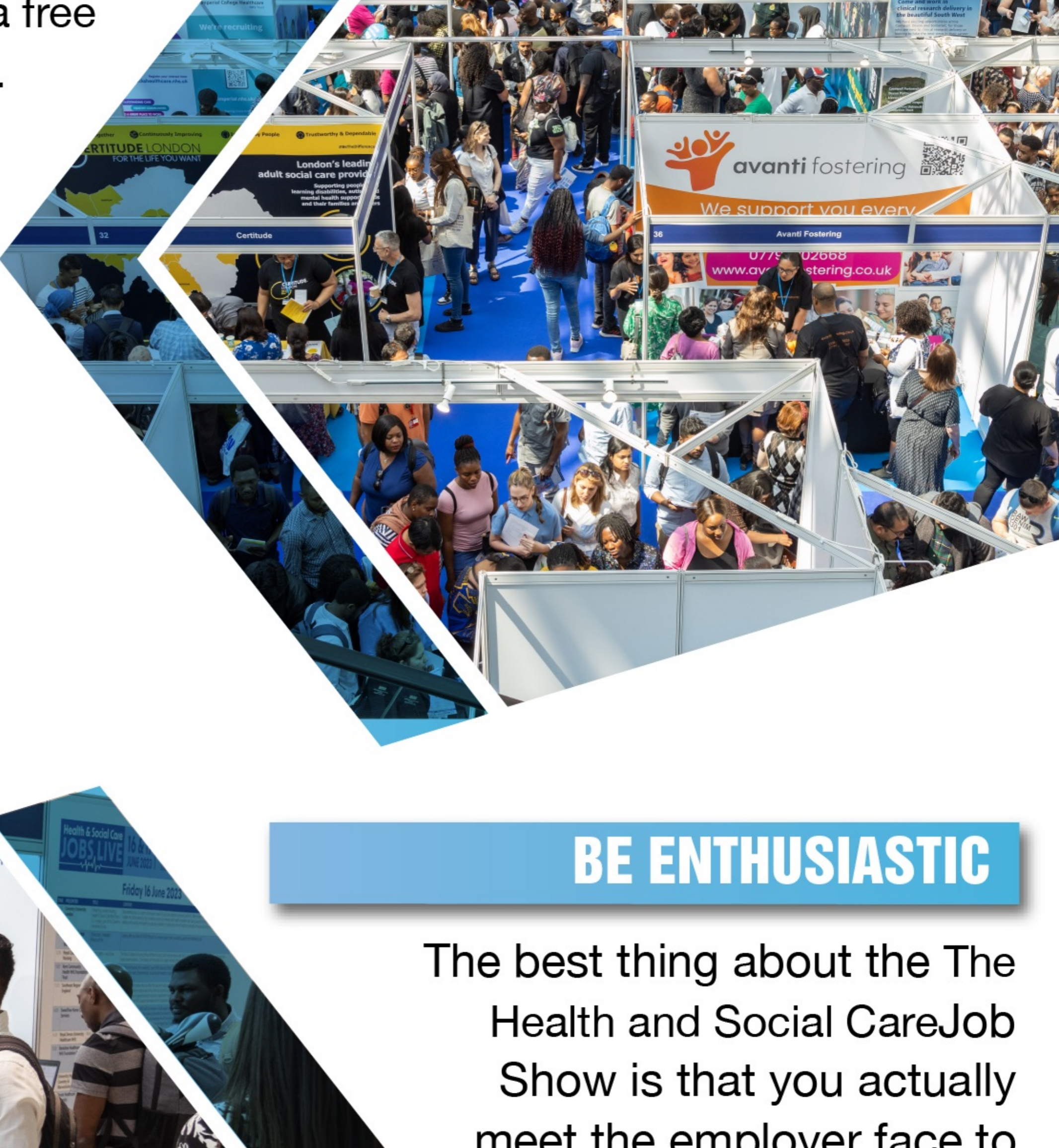


## AT THE SHOW

### CHECK OUT THE FLOORPLAN

We highly recommend visiting our information desk to collect a free copy of the Event Floorplan. This will help you mark the stands that you want to visit and ensure that you don't miss out on a great opportunity.

73% of recruiters say they know whether you are a good fit in about 2 minutes



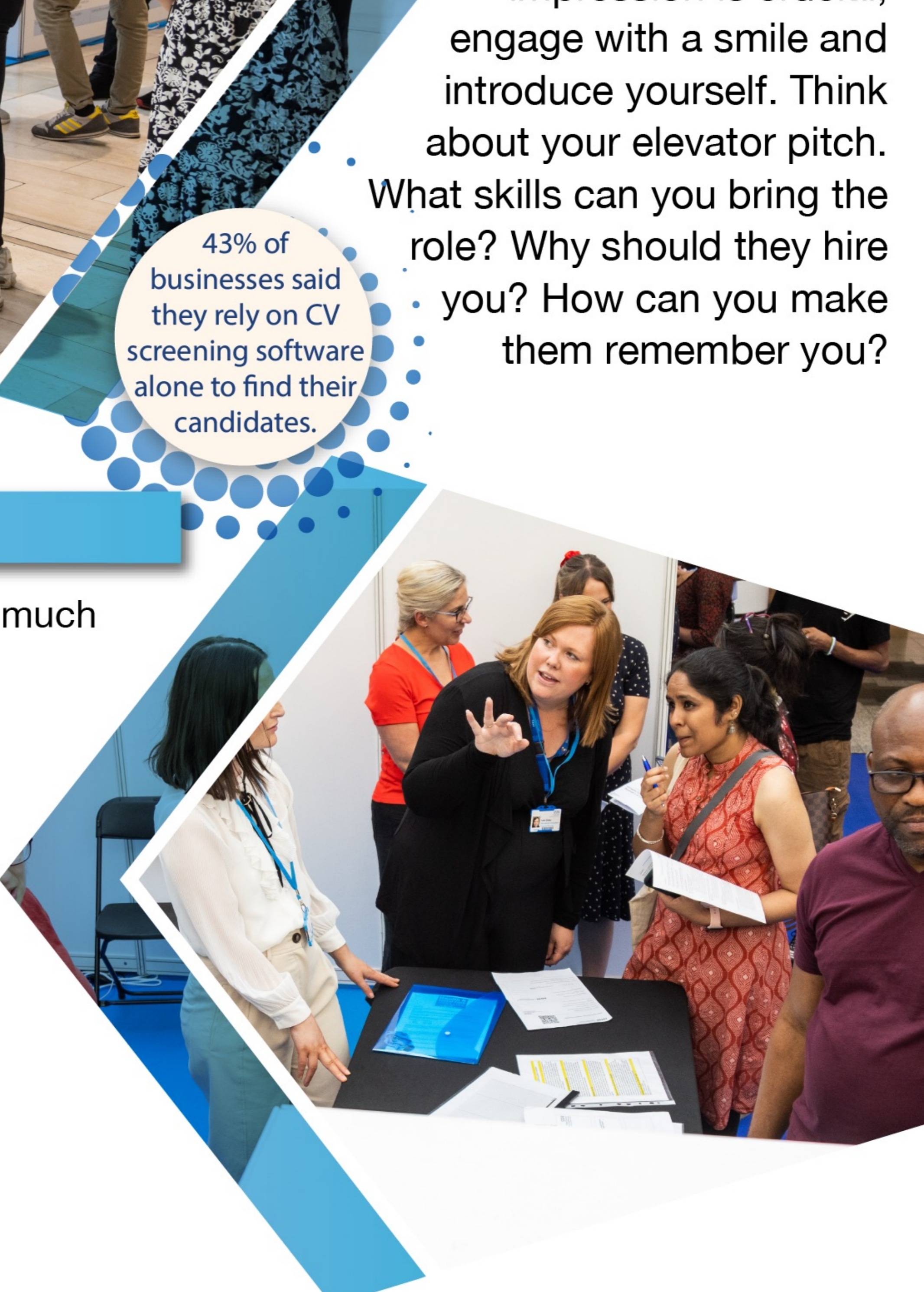
### BE ENTHUSIASTIC

The best thing about the The Health and Social Care Job Show is that you actually meet the employer face to face, so a good first impression is crucial, engage with a smile and introduce yourself. Think about your elevator pitch. What skills can you bring the role? Why should they hire you? How can you make them remember you?

### STAY ORGANISED

With so many faces and so much information to take in, we recommend bringing a notepad and pen to remember who you spoke to and important dates (e.g. assessment days or application deadlines).

76% of resumes are rejected if the candidate includes an unprofessional email address.



43% of businesses said they rely on CV screening software alone to find their candidates.

### ATTEND THE SEMINARS

The Health and Social Care Job Show is here to support you with your job search. Hear from recruitment professionals on topics like; Writing the perfect CV, interview tips and more!

There are seminars running every 30 minutes, where a new topic is discussed by a different professional.



### BE PROACTIVE

Feel the conversation went well? Show your intent and ask them for the next steps so you have a clear idea of the recruitment process and what you need to do

60% of jobs are found through networking, not online



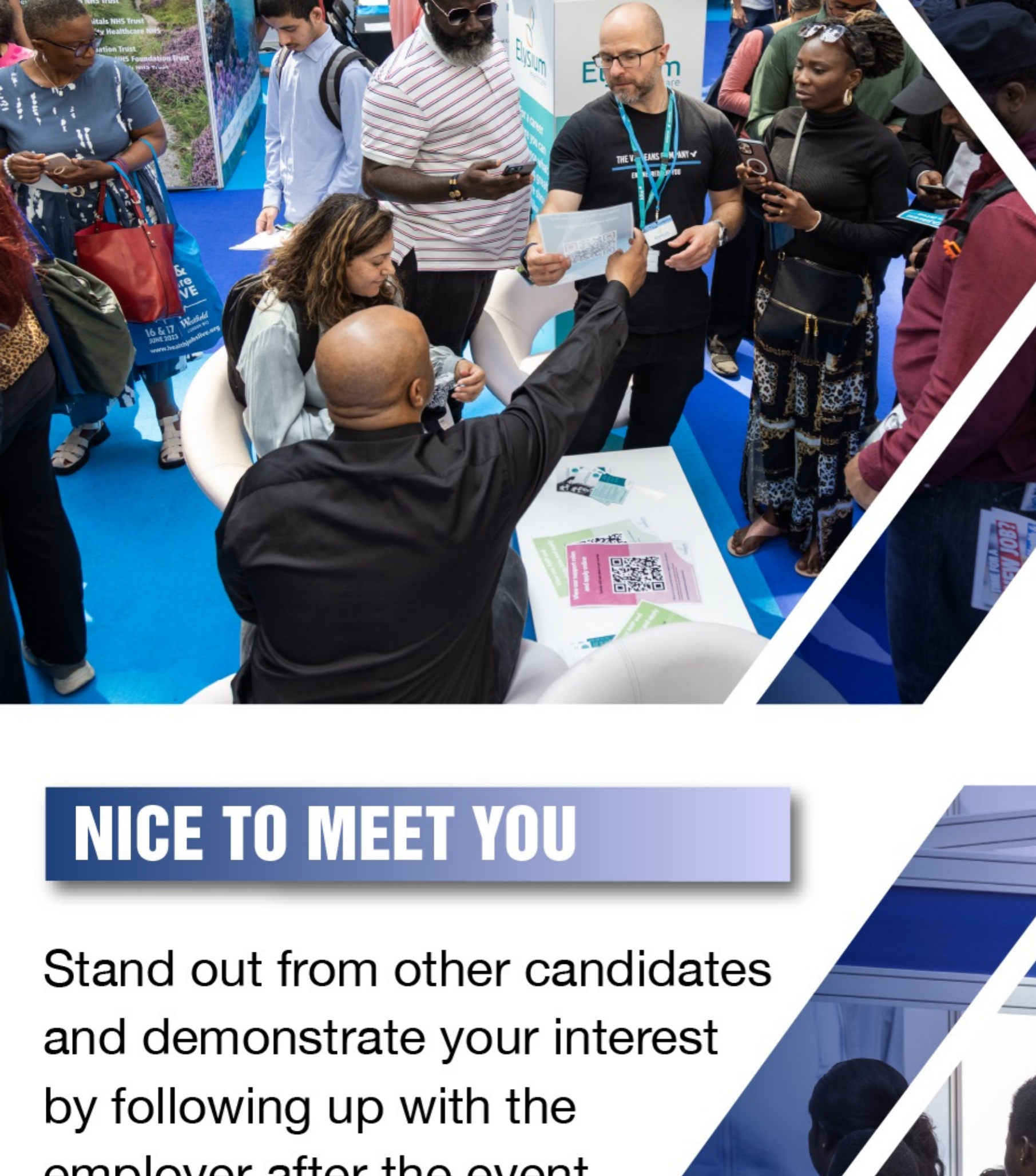
## AFTER THE SHOW

### DATES TO REMEMBER

Whilst it is fresh in your mind, type up your notes. Create a list of who you spoke to and next steps for you to take.

Remember to add important dates to your calendar such as assessment days, interview dates or application deadlines.

93% of recruiters are likely to look at a candidate's social media profile



### NICE TO MEET YOU

Stand out from other candidates and demonstrate your interest by following up with the employer after the event, a simple thank you email or add on LinkedIn will help establish a connection between you and the employer. Remember they will have met a lot of candidates at the event so taking this initiative will help you stand out.



### INTERVIEW SUCCESS

Before your interviews, refer back to your notes and who you spoke to. Research the company and thoroughly go through the roles of the job. Practice answering common interview questions. Dress for success. Arrive early. Stay positive and Follow up.

55% of your first impression is established by the way you dress, smile and walk through the door.



Health and Social Care Job Show

Health and Social Care Job Show

For more information go to [www.healthjobslive.org](http://www.healthjobslive.org)