



# Health & Social Care JOB SHOW



10 & 11  
MAY 2024

*Westfield*  
LONDON W12



**JOIN US AT THE UK'S BIGGEST & BEST HEALTHCARE RECRUITMENT EVENT**

# READ WHAT OUR EXHIBITORS HAVE TO SAY ABOUT THE HEALTH AND SOCIAL CARE JOB SHOW...



We received **950** expressions of interest. Including **63** AHP's, **105** Estates & Facilities (hotel services), **42** Doctors, **110** scientists (several different disciplines), **12** Pharmacists, **68** qualified Nurses, plus 100's of Healthcare Support Workers. Financially it's a great deal for two days and an insane footfall. We will definitely be at the next show.

Imperial College Healthcare   
NHS Trust

This event has been fantastic. Good number of candidates. Friendly supportive staff. Very well advertised too. **We have met people for IT, Administration, Nurses, Clinical, management, physiology.** It's a good way to meet people in an informal environment. We would definitely recommend it.

 University Hospitals Coventry and Warwickshire NHS Trust



We've had some really great & interesting candidates. **To any other organisation considering this, I'd say go for it, its worth it. So worth it!**

 Mid and South Essex NHS Foundation Trust



**LCW** London Central & West UNSCHEDULED CARE COLLABORATIVE  
**1,500 registrations so far. 300+ quality candidates.** We've spoken to Doctors, Nurses, Neuro Consultants, Dentists. A varied range of Clinical and Non-Clinical staff. This is a breath of fresh air. This is fantastic.



**We have seen some great people.** 5 Doctors, 30 Nurses, 5 AHP's, 2 Dentists, 10 Biomedical Scientists, 5 Health Informatics, 6 Midwife's, 5 Psychological Professionals, 5 Management Professionals, and 900 people for Support roles!

 Buckinghamshire Healthcare NHS Trust



The venue's good, the energy is good, it's been non-stop all day. **We have had some fantastic candidates. Psychologists, Social Workers, Nurses, HCA's.** But it's the qualified Clinical Professionals that we have seen a lot of, and we didn't expect it. An event like this would be our choice every single time. It's been extremely successful.

 Elysium Healthcare



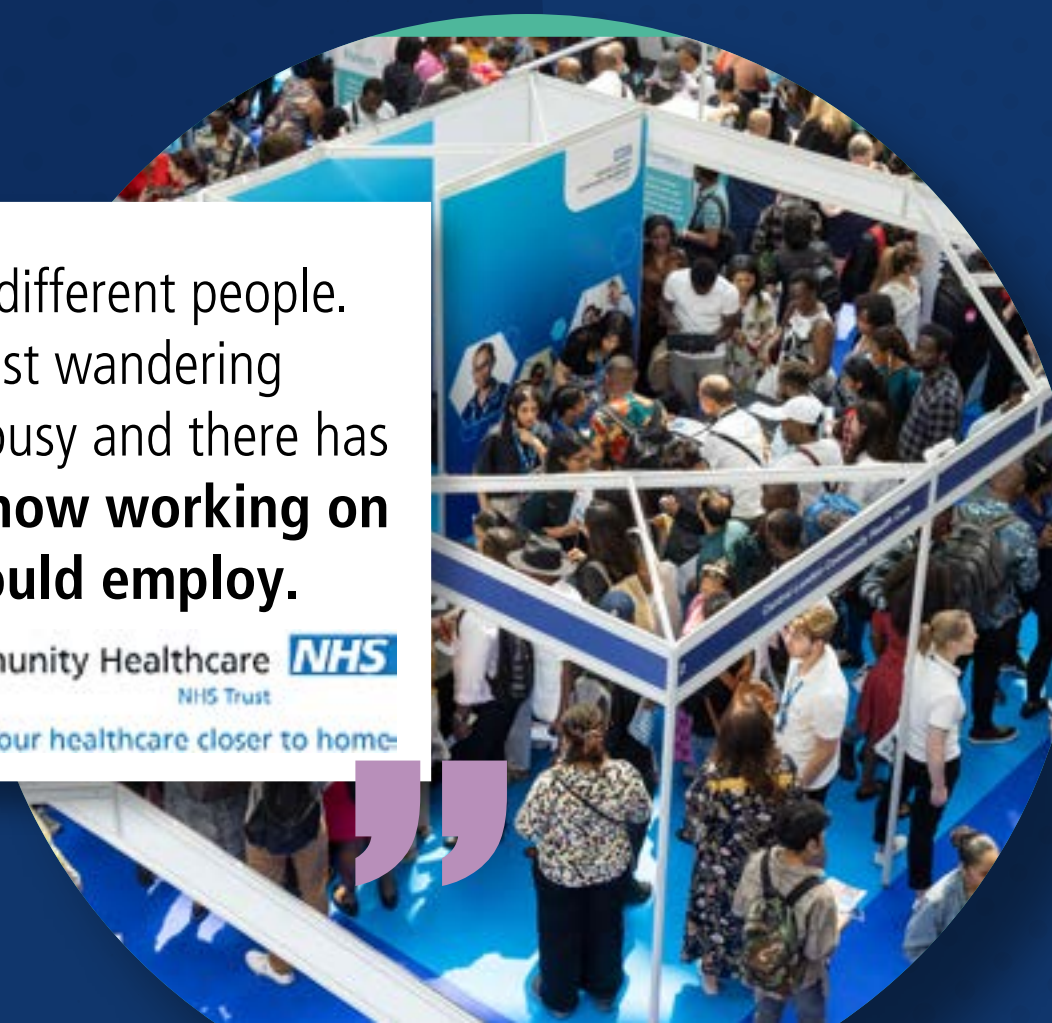
We have had such an incredible time. To come to an event with 25,000 footfall is on another level to other events we have been to. We would recommend it 100%.

 SCW



We have had so much interest from so many different people. We have picked up a few people who were just wandering passed doing their shopping. It's been really busy and there has been a really steady flow of people. **We are now working on 172 applications for people who we would employ.**

Central London Community Healthcare  NHS Trust  
Your healthcare closer to home



The event is Fab! It is well organised. Lots and lots of interest from a wide range of people, busier than we expected. **Some really interesting people that we wouldn't have met otherwise.** It's been a really good opportunity.



This event is a step above in terms of the numbers of people that attend, but also their suitability as well. Obviously the marketing has gone out really really well. **The types of people coming in are exactly the types of people we are looking for.** So we are really happy to have attended.



**We have been inundated with really interested candidates, and high quality as well.** So It's definitely been worthwhile us attending. We have met Speech and Language Therapists, OT's, Physios, Podiatrists and of course Nurses.



Very busy, busier than we anticipated. **It's been a really positive experience!** We are already signed up for another event.



**We would 100% recommend it.** It's the biggest event where we can get the most people from. **This event gives us the most exposure out of any event we do.**



It is wonderful. We have had so much positive attention. Lots of people interested in the vacancies that we have. **We have had Adult Nurses, Paediatric Nurses and Learning Disability Nurses.**



Great turnout. It's really busy. It's really diverse. We have had some really good conversations. And we have already spoken to the Health and Social Care Job Show team about joining the Bristol event.



It's been absolutely amazing. **We didn't envisage we would get so many applicants.** Yesterday was outstanding and today has been even better



## ABOUT US

We are the leading organiser of the UK's biggest and best recruitment events. Over the last 10 years we have become a trusted partner with health and social care employers of all sizes, course providers and training organisations.

In 2024, Health & Social Care organisations from across the UK, will meet thousands of active job seekers, set in Westfield London W12 Shopping Centre, which is the busiest in the UK with over 250,000 people visiting every Friday and Saturday.

Health & Social Care Job Show is an absolute must attend event for any Health & Social Care employers. Whether you're an NHS Trust or a Care group with 100's of positions available or a local authority commissioned provider that has a handful of vacancies, we have developed this fantastic solution for you.



**15,000+**  
**Active Job seekers**

The amount of people that pre register to attend each event having seen our targeted marketing campaign.



**250,000+**  
**Passive Job seekers**

The natural footfall of our Westfield W12 venue.



**5 - 60**  
**New Hires**

The amount of hires employers typically make per event.



**200 -1,000**  
**Talent Pool / Bank Additions**

The amount of people employers typically add to their talent pool per event.



**400-6,000**  
**Profile Views**

The amount of profile views exhibitors typically receive on our website before each event.

# BENEFITS OF ATTENDING THE HEALTH AND SOCIAL CARE JOB SHOW

## 1 Cost Effective

Employers typically hire 5 - 60 people per event. With regards to cost per hire, compared to agency fees, exhibitors continue to save money from attending the event. There is no a limit to the amount of candidates you can hire, and no ongoing fees.



## 2 Growing Your Bank\Talent Pool

Employers typically add 200 - 1,000 people to their talent pool at the event. A new talent pool of people they can hire from throughout the year. Many exhibitors will hire people they meet during the event 3-6 months afterwards.



## 3 Pre Event Applications

Our website and marketing campaigns generate huge exposure for each exhibitor. Many job seekers will see an employer is attending our event and will apply to them directly in the weeks and months before the event. This is in addition to the hires employers make during and after the event.



## 4 Active Job seekers

Over 15,000+ people pre-registered to attend the last event. Our extensive marketing campaign targets candidates that match the vacancies of our exhibitors.



## 5 Passive Job seekers

How do you target people that are not actively looking for a new job? How do you reach people that are not signed up with job boards or recruiters? This is the very reason we hold our events in middle of the UK's busiest shopping centres. Over 250,000 people visit each venue during each event. As our events are open from all sides, these people can all freely walk in to meet the exhibitors.



## 6 Face to Face Recruitment

By meeting thousands of candidates in person you can quickly assess their suitability for a role. Attending the event quite literally adds a personality to an application. This can save a lot of time and energy compared to online applications.



## 7 Employer Branding

They might have heard of you, but have they thought of you as an employer? Or do they realise you have a particular type of vacancy available? Showcase what makes your organisation great at the UK's biggest Health and Social Care career event.



## 8 Standing Out Offline

With over a million online jobs in the UK, it is difficult for employers to stand out. In a competitive job market, it pays to be proactive and to go directly to the candidates and talk to them about why your organisation is the best place to work.





## EXHIBITOR CASE STUDY

**NHS 75**

**Imperial College Healthcare**

NHS Trust

**Q** Can you give us a brief overview of Imperial College Healthcare Trust?

**A** We employ more than 14,500 staff over five hospitals, There are over 200 clinical services at the Trust and we treat about 1.3 million patients per year.

**Q** How many vacancies do you currently have?

**A** Around 2000 vacancies in a wide variety of roles from non-clinical to Band 2 staff right through to consultant and specialist positions.

**Q** Why did you decide to attend the Health & Social Care Job Show?

**A** A number of factors; Firstly, it was about us being visible as an organisation and being in the middle of the UK's busiest shopping centre is a good place to start. Secondly, with us having such varied vacancies, in many different departments it helps us see lots of the right people in one go, saving us time, money & resources.

**Q** How many candidates did you meet at the event?

**A** We had 950 expressions of interest, 63 AHP's, 105 Estates & Facilities (hotel services), 42 Doctors, 110 scientists (several different disciplines), 12 Pharmacists, 68 qualified Nurses, plus 100's of Healthcare Support Workers.

**Q** What have you enjoyed most about the show?

**A** The team at JS Media make it very simple to exhibit from start to finish, they delivered the event professionally and we achieved what we came for.

**Q** If you could sum up Health & Social Care Job Show what would you say?

**A** Financially it's a great deal for two days and an insane footfall, we will definitely be at the next show

**950**

Expressions of interest

**110**

Scientists

**63**

AHP's

**68**

Qualified nurses

**12**

Pharmacists

**105**

Estates & Facilities (hotel services)

**42**

Doctors

## EXTENSIVE MARKETING CAMPAIGN

**A targeted, UK wide, extensive marketing campaign for the Health & Social Care sector**

- Targeted ITV & Sky TV campaign
- National and regional radio Campaign
- Full Page Adverts in the Metro & Evening Standard
- Adverts & Editorials in national & regional newspapers
- National and regional PR Campaign
- Inclusion in shopping centre email newsletters to their visitor database
- Promotional team positioned at local train stations and the shopping centre entrances directing people to the event
- Promoted Eventbrite campaign
- Advertising in Health Sector Media
- Health & Social Care Opportunities Newspaper
- Health & Social Care Job Show Magazine
- Rail and Underground Poster Campaign
- Exhibitor Vacancies
- Digital Posters on all screens throughout Westfield
- Paid targeted social media campaigns on Facebook, Google, Instagram, LinkedIn and TikTok
- Event Invitations emailed to career advisors at 1,100+ Schools, Six Forms, Colleges and Universities across the UK

## PR & SOCIAL REACH FROM FIRST EVENT

- Facebook Total Reach: 527 thousand
- Facebook Total Impressions: 1.7 million
- TikTok Total Views: over 1.5 million
- Total Circulation/unique users: 7.2 million
- Editorial in Metro 2.3 million Daily Print Readership
- Editorial in Evening Standard 1.15 million DPR
- Total number of PR articles placed: 44

## EVENT PROMOTION

The Health and Social Care team promotes the show with our own stands at job shows and other events including the nursing congress. This helps to increase the quality of visitors and makes the show the huge success it is.

**Our survey results found that**

**93%**

of candidates come to the show with their CV

**82%**

of candidates said they **WOULD** relocate for the right job

**73%**

of visitors work or have worked in the health and social care sector

Contact our team today at [info@healthjobslive.org](mailto:info@healthjobslive.org)

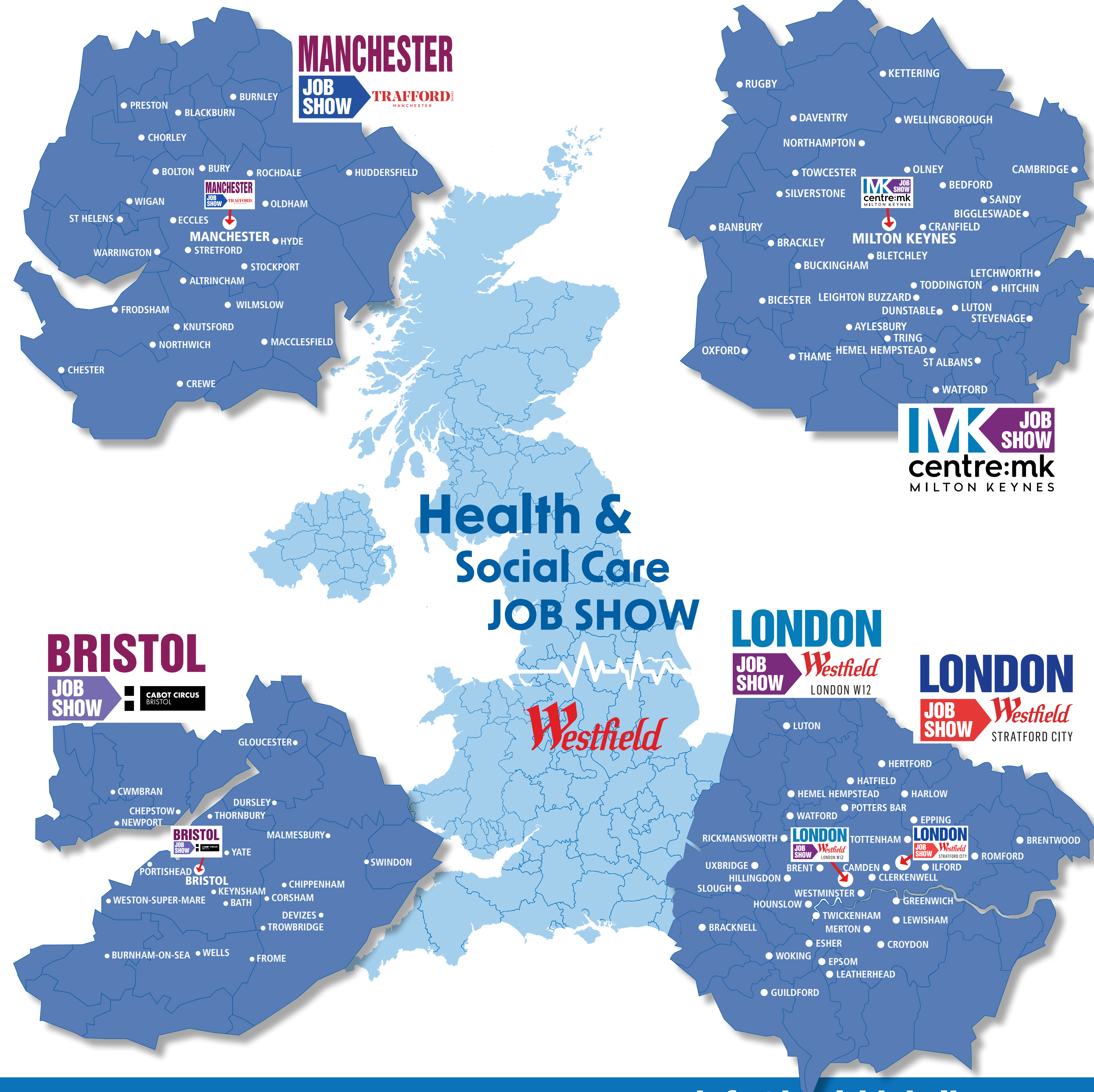


## JOB SHOW 2024 DATES

Many of the Health and Social Care employers we work with also exhibit in the Health and Social Care zones at our regional Job Show events.

It's a great opportunity to promote your clinical and non-clinical vacancies.

SHOW	2024 DATES
Manchester Job Show	1 & 2 March 2024
MK Job Show	22 & 23 March 2024
London Job Show W12	26 & 27 April 2024
Health and Social Care	10 & 11 May 2024
Bristol Job Show	6 & 7 September 2024
Manchester Job Show	13 & 14 September 2024
MK Job Show	20 & 21 September 2024
London Job Show Stratford	27 & 28 September 2024
London Job Show W12	11 & 12 October 2024

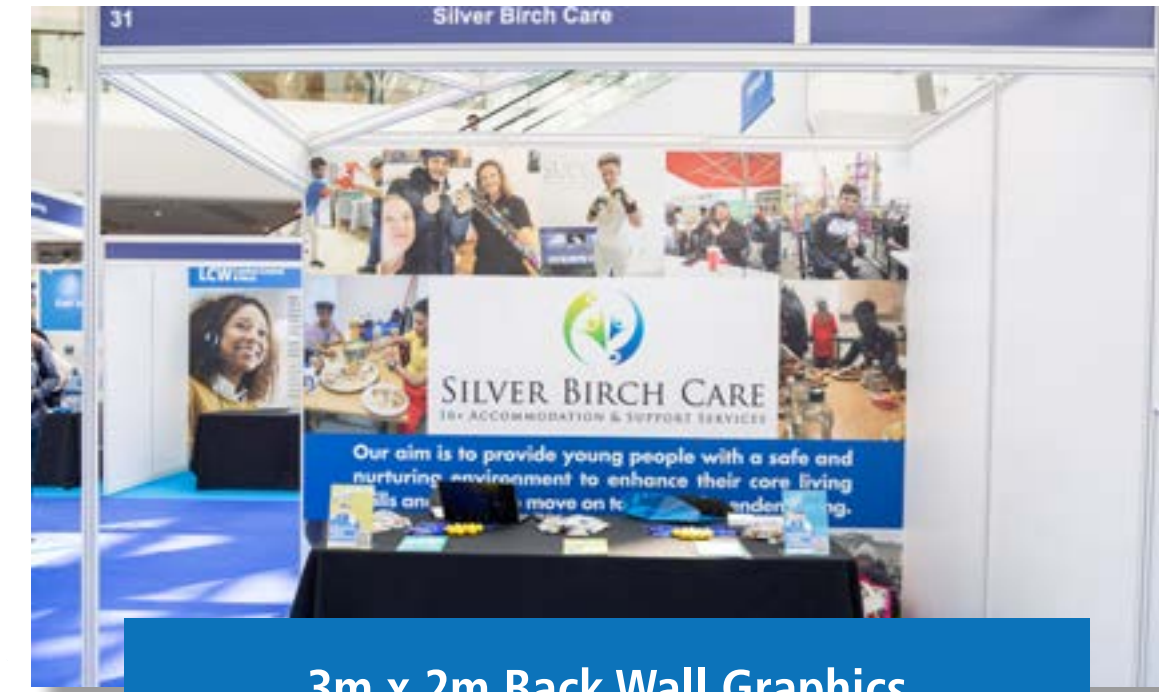


Contact our team today at [info@healthjobslive.org](mailto:info@healthjobslive.org)



# ALL INCLUSIVE SPONSORSHIP & EXHIBITOR PACKAGES

With almost everything included in our packages, exhibiting at our events is easy. Our experienced team will help you every step of the way. Imagine what you could do with your stand! To discuss your involvement at the event contact our team today at [info@healthjobslive.org](mailto:info@healthjobslive.org)



3m x 2m Back Wall Graphics



3m x 3m Back & Side Wall Graphics



3m x 5m With 1 Interview Booth & 1 Pillar



5m x 5m With 2 Interview Booths



5m x 5m with 2 pillars



## NEXT STEPS

To proceed with booking in to the event contact our team today at [info@healthjobslive.org](mailto:info@healthjobslive.org)



**Health &  
Social Care  
JOB SHOW**



**10 & 11  
MAY 2024** | *Westfield*  
LONDON W12

**CONTACT OUR TEAM TODAY AT [info@healthjobs.org](mailto:info@healthjobs.org)**